

the perfect look:

# TRENDSHOW GUIDELINES



**preview 2014**



# VILLA

## VILLA (est. in 2009)

*Aristocratically muted colours and restrained, almost neo-baroque ornaments create a grandiose, luxurious atmosphere, which radiates lifestyle comfort. The understated elegance of a hunting lodge and the francophile joie de vivre of an orangery are deliberately created associations. Velvet, linen and vintage leather are stretched across solid woods such as an Canadian oak, making them real jewels.*

### EXEMPLARY ARTICLES:



73645



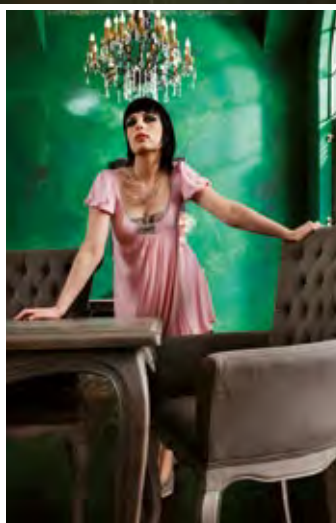
73663



78798



73672



### COLORRANGE:

PANTONE 7732

RAL 6029



## SHAMELESS VILLA (est. in 2014)

*The opulent dream of every lover of castles and anything opulent – but with a twist of vanitas motifs. A luxurious table with velvety chairs meet all forms of skulls and glittery accessories. Single collector's pieces such as an Asian wardrobe or a wooden chandelier blend to a dining situation with baroque forms and antique décor.*

### EXEMPLARY ARTICLES:



78783



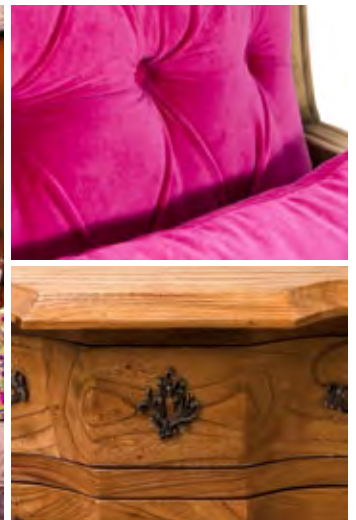
78124



78693



66526



### COLORRANGE:

PANTONE 150 C

RAL 2003



## OFFROAD (est. in 2012)

*This furnishing world pays homage to boundless freedom and wild independence. Its occupants are the protagonists of a road movie, always curious about the world outside, always on the move with a suitcase in their hand. Offroad provides furnishing building blocks for a down-to-earth home which can be in Munich today and in Marrakesh tomorrow. Always part of the fixtures: original travel souvenirs, masculine leather and solid wood furniture which will survive every time you move house.*

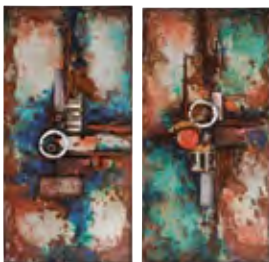
## EXEMPLARY ARTICLES:



76311



77153



32731



77520



## COLORRANGE:

PANTONE 7769

RAL 7002



## AUTHENTICO (est. in 2009)

A modern yet cosy collection for those who are looking for a solid and basic style. Authentico is for everyone and likes to be combined with all sorts of styles. Shesham wood with natural finish.

### EXEMPLARY ARTICLES:



74493



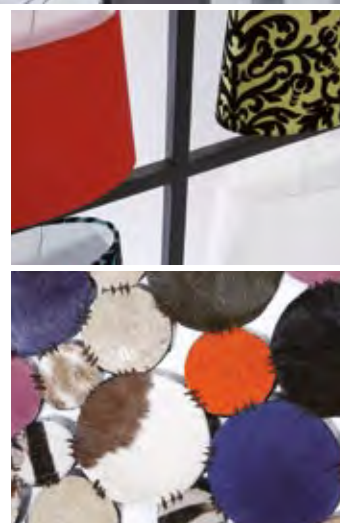
74771



69825



63818



### COLORRANGE:

PANTONE 7529

RAL 1019

WHITE



## BABALOU (est. in 2011)

*Babalou is the trendshow with heart. A sixties-inspired collection of material mix combined with treasures of all kinds. Decorate with playful details, warm and bright colours and patchwork items.*

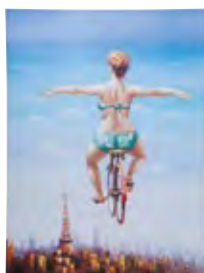
### EXEMPLARY ARTICLES:



76855



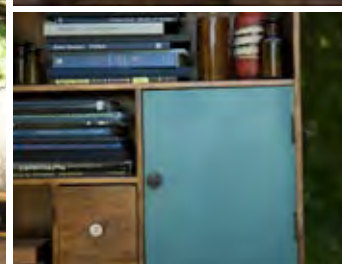
76853



35202



78667



### COLORRANGE:

WHITE

PANTONE 142

RAL 1034

PANTONE 644

RAL 5024

PANTONE 2338

RAL 3014

PANTONE 2404

RAL 6011



## FASHION REBEL (est. in 2010)

*Rebellious and passionately casual. Conventional is a thing of the past - with the Fashion Rebels collection we break through formal barriers combining treasured vintage objects and newly-born icons of modernity into irresistible arrangements. Anything-but-ordinary furniture and decorative ideas for all furnishing fans who love loft living and surrounding themselves with rough materials such as iron, aged wood full of character and rustic leather.*

### EXEMPLARY ARTICLES:



64782



75613



30398



75178



### COLORRANGE:

PANTONE 2185

RAL 5019

PANTONE 62332

RAL 7005



# VEGAS GOLD

## VEGAS GOLD (est. in 2011)

*Opulent, luxurious, amusing. This trendshow luxuriates in elegant excess. our inspiration is Las Vegas in its heyday. A huge variety of colours and forms awaken the American dream of the Sixties to new contemporary life. we play with warm shades of gold and champagne an mix metallic colours.*

## EXEMPLARY ARTICLES:



76515



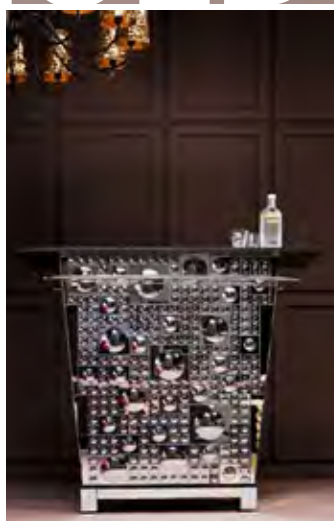
32022



76431



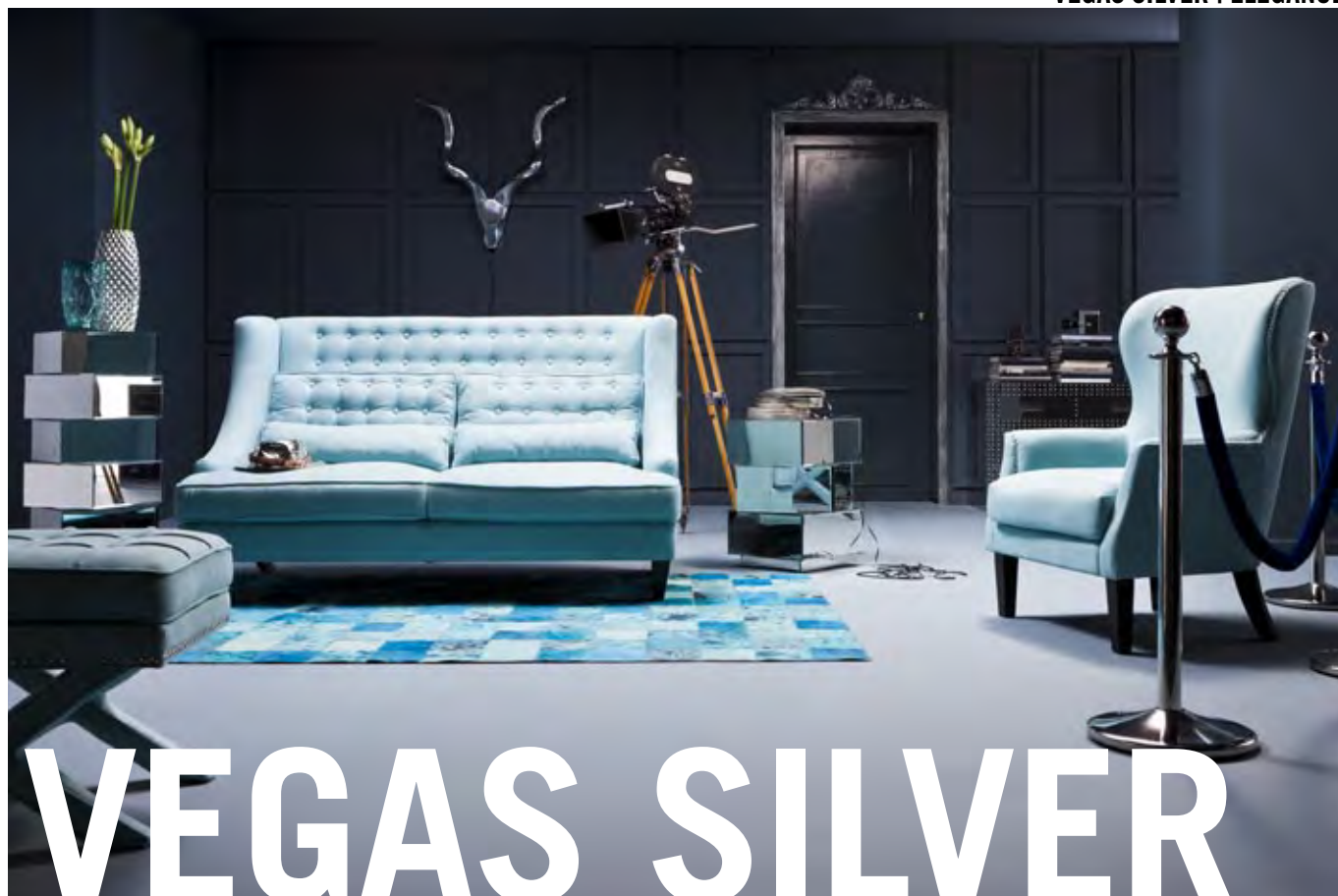
32019



## COLORRANGE:

PANTONE 7529

RAL 1019



## VEGAS SILVER (est. in 2011)

A powerful Mediterranean sky blue experiences its revival in capricious upholstered furniture. Those who dare immerse their home in this opulent over-the-top look and revel it! Siegfried and Roy, Sue Ellen and JR Ewing invite you for cocktails!

### EXEMPLARY ARTICLES:



76652



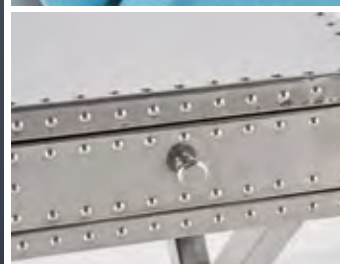
74892



76340



75237



### COLORRANGE:

PANTONE 101

RAL 1016

WHITE

PANTONE 442

RAL 7024

# METROPOLIS



## METROPOLIS *(est. in 2006)*

*Decisively cosmopolitan, timeless and elegant. This home couture range for connoisseurs and decision-makers takes stylistic elements from the Art Deco and Bauhaus movements, and uses luxurious black as a colour statement. Material details in metallic tones give the metropolitan ambience.*

## EXEMPLARY ARTICLES:



32973



76205



35195



76347



## COLORRANGE:

PANTONE 425

RAL 7015

# ROCKSTAR



## ROCKSTAR (est. in 2006)

Striking, dramatic and rock and roll. Sinful indulgence, baroque decoration and a touch of Greco-Roman opulence with nuances in silver, dark violet and black - from these components this world creates the rockstar factor for your home. Glamorous lighting, delicate beds and the legendary bar are the soloists who meet in an atmosphere of creative tension. Elegance can definitely be sexy!

## EXEMPLARY ARTICLES:



9802



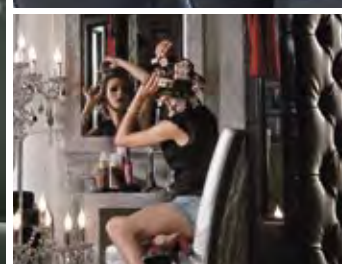
66391



72716



62982



## COLORRANGE:

PANTONE BLACK C

PANTONE 513

RAL 4008

PANTONE 7656

RAL 4006

# WHITE DIVA



## WHITE DIVA (est. in 2008)

*Divine, feminine and seductive. This furnishing world has a clear star appeal and will wake the diva in you! The White Diva collection glows subtly in gleaming white. Multi-faceted mirrors and accessories sparkle with cut glass. Furniture is decorated by rhinestones and glowingly put in the spotlight.*

## EXEMPLARY ARTICLES:



68009



33772



75958



75263



## COLORRANGE:

WHITE



# WHITE CLUB

## WHITE CLUB *(est. in 2006)*

Retro, highly modern and therefore very much in fashion. Our idols are the architects Oscar Niemayer and Zaha Hadid. This grandiose collection appeals to trend setters with a flair for good design. The furniture series in this trendshow are clearly dedicated to flowing and organic forms and to the colour white. We skilfully stage them with a touch of futurism, polished to a high gloss. The tables and shelves in the Retro Design trendshow definitely have the potential to become design classics. Absolutely furnishing crazy and outstandingly individualist."

## EXEMPLARY ARTICLES:



35738



75193



71542



73943



## COLORRANGE:

WHITE



## SOHO (est. in 2010)

*The Englishman in New York likes to surround himself with royal Accessories and the Union Jack itself is a must-have in every room of his. The style is raw and industrial, Oxford Sofas and Studs show that is no stranger to the English Rock scene either.*

## EXEMPLARY ARTICLES:



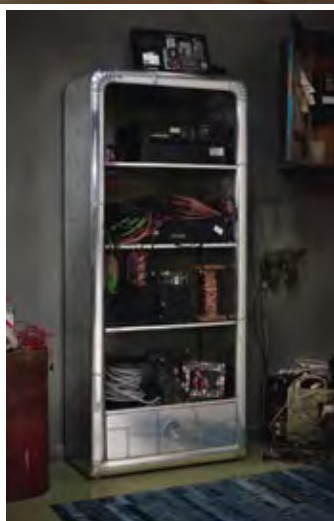
30710



76383



76816



## COLORRANGE:

WHITE

PANTONE 2185

RAL 5019



# OFFICE LOFT

## OFFICE LOFT *(est. in 2014)*

The modern kind of an office – a symbiosis of working place and living space. High quality furniture made of pine wood, iron and all kinds of metal. Added school chairs and vintage shapes in all kinds of wooden colours are put together to today's working station. A modern touch is added by lights and accessories in pop colours – do not hesitate to mix a multicolour carpet, a neon green lamp and walldecor in bright pink. We used a picture of the Kare Kraftwerk, too, so can you if you desire.

## EXEMPLARY ARTICLES:



78657



34522



78596



36033



## COLORRANGE:

PANTONE 7769

RAL 7002



# INDUSTRIAL LOFT

## INDUSTRIAL LOFT *(est. in 2013)*

A mirror for our times in which the formal treasury of industrial architecture merges with the new spirit of the times. This collection for the young at heart of all ages creates an incomparable style mix consisting of the London loft, creative New York atelier and Parisian café idyll. Old wood and metal are recycled and reborn as the materials for unique trend furniture. Industrial Loft casually combines colourful furnishing accessories with retro furniture against a background of soft shades of anthracite.

## EXEMPLARY ARTICLES:



77179



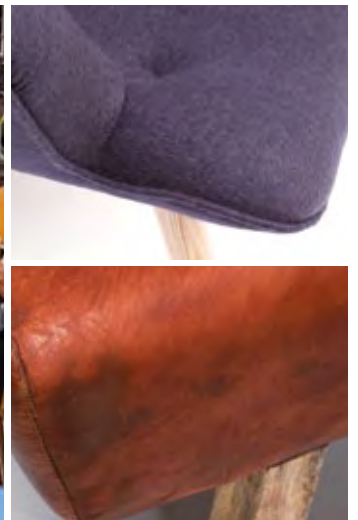
74411



77103



76696



## COLORRANGE:

PANTONE 418

RAL 7012



# BLUE DESERT

## BLUE DESERT *(est. in 2014)*

The modern safari style with a furniture base made of oak, iron and leather. A soft denim blue (walls, single furniture items) adds colour to the ambience. Benches and stools with gym impression meet wall decor of wild animals in shape of glass pictures or deco heads in silver colour.

## EXEMPLARY ARTICLES:



78725



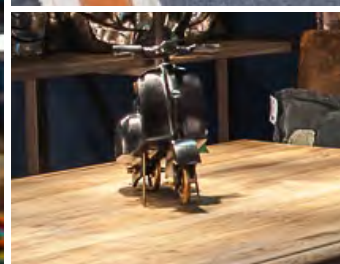
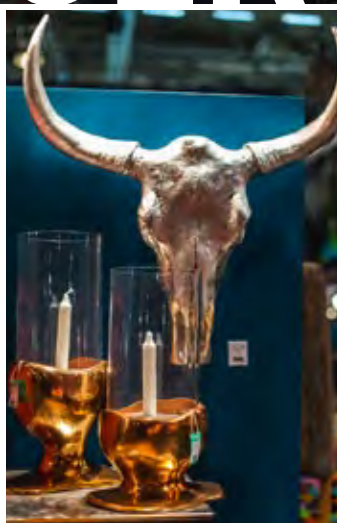
35855



77623



78575



## COLORRANGE:

PANTONE 422

RAL 7040

PANTONE 652

RAL 5014

PANTONE 144

RAL 2000



# TABERNA

## TABERNA (est. in 2009)

*This collection represents a rendezvous with the poetic side of living. Tables, chests of drawers and cupboards lovingly brought into the present day by our designers come together here. Surfaces painted antique white and light, solid wood are reminiscent of the irresistible charm of English cottages, radically rejuvenated with witty accessories and cheerful patchwork. New Romantic creates a feeling of homely romanticism for the trend-conscious and does without any unnecessary prettifying.*

### EXEMPLARY ARTICLES:



78042



76655



76954



76862



### COLORRANGE:

PANTONE 2191

RAL 5012



## CARAMELLA (est. in 2014)

Pastel Pop colours meet shabby chic. A warm-hearted collection inspired by candy, ice cream and holiday feeling for the young and young-at-heart with bright and soft colours and girlish details. White main colour, details in pink, turquoise, and green. Background is a light pink colour gradient, ideally decorated with Indian Holi-colours to provide an overall summerly feeling.

### EXEMPLARY ARTICLES:



78711



34466



34938



35964



### COLORRANGE:

PANTONE 225

RAL 4003

# IBIZA



## IBIZA (est. in 2007)

*This warm hearted collection brings cheerfulness, holiday sensations and vibrant joie de vivre into your home. Tables, chairs and chests of drawers combine to provide a firework of colours, decorating themselves with pretty borders and imaginative flower patterns. With flair and imagination this collection turns the rooms of the young and the young at heart into an ambience for the hippies of today. And for purists, too, the Ibiza collection is well worth a walk on the wild side.*

## EXEMPLARY ARTICLES:



75155



75153



69897



## COLORRANGE:

PANTONE 2191

RAL 5012

PANTONE 226

RAL 4010

# PATCHWORK

## PATCHWORK (est. in 2010)

*A playful and girly collection with much love for the details. Flowerly and romantic fabrics, natural materials and the joy of life are included in every item.*

### EXEMPLARY ARTICLES:



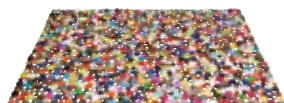
31592



75161



76906



30677



### COLORRANGE:

PANTONE 3295

RAL 6026

PANTONE 7485

RAL 6019



# MOCCA

## MOCCA *(est. in 2012)*

*Warm an cosy, high end material and sensual shapes: medium brown look, golden and copper metals, glass and mirrors shape a world of luxurious cosyess. Everything is elegant and smells like luxury. All colours of brown and metal are welcome.*

## EXEMPLARY ARTICLES:



77105



34096



20070



34754



## COLORRANGE:

PANTONE 449

RAL 8014



## SHAMELESS PARADISE (est. in 2013)

*The shameless paradise is a sinful hideaway for the hedonistic and open minded. Pure decadence with luscious materials, endless joy and high end parties, everything is possible between oversized chandeliers and silver plated tables. Accessories from every antique superpower and century combined with today's colours and materials are combined to a cocoon for lovers and sinners.*

### EXEMPLARY ARTICLES:



76821



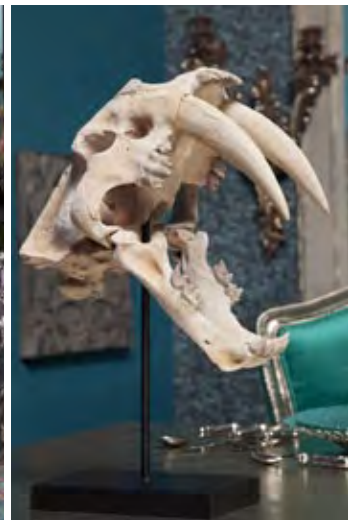
35937



78278



78128



### COLORRANGE:

PANTONE 3165

RAL 5020



# FACTORY

## FACTORY *(est. in 2007)*

Raw and rough but with an affectation to high quality - the factory trendshow is located where the style is: in brooklyn's lofts and in the Meatpacking District. Bricks and concrete are obligatory for a modern factory, high quality leather a must and metals as well as natural materials complete the look.

## EXEMPLARY ARTICLES:



78330



78826



35959



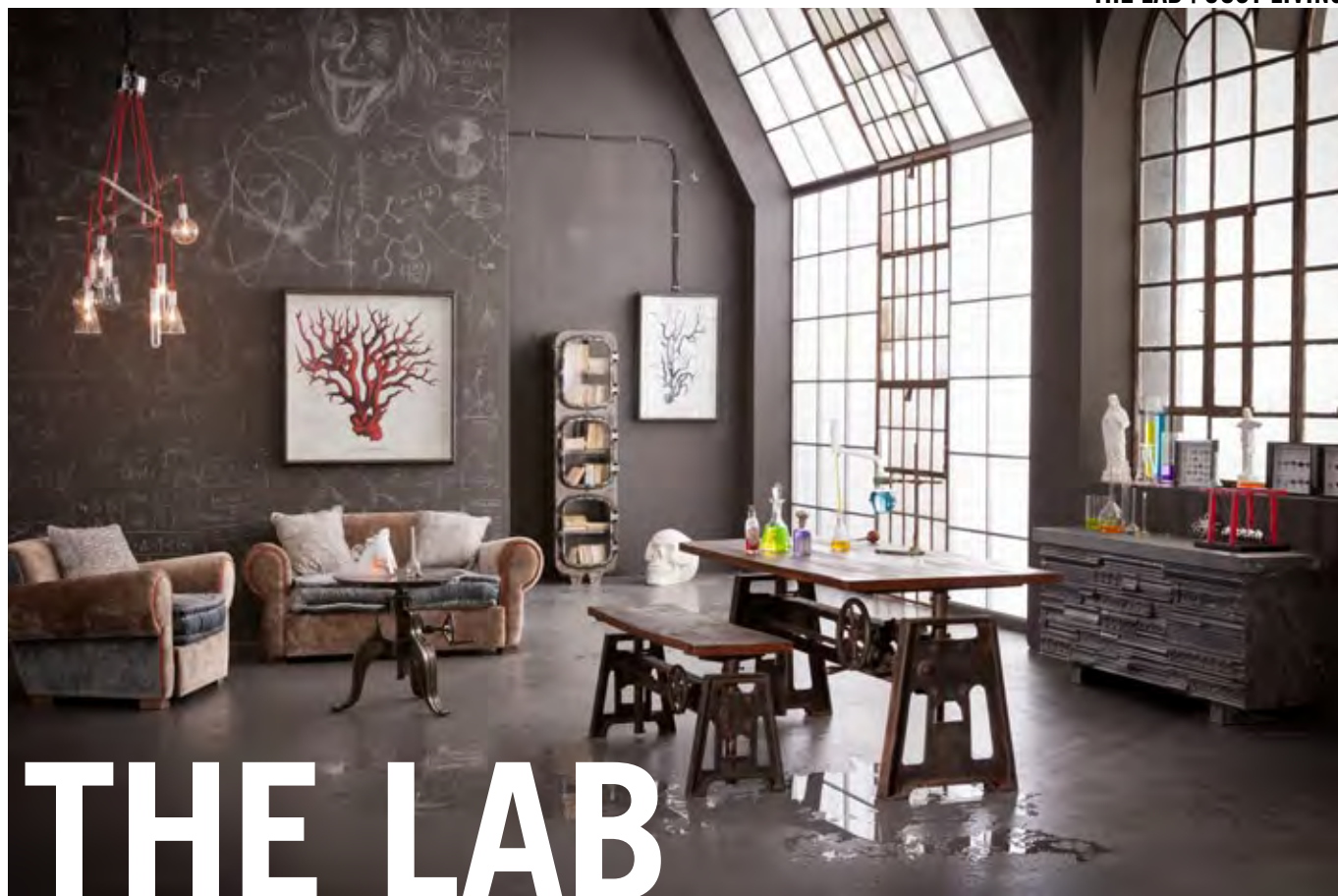
35953



## COLORRANGE:

PANTONE 7769

RAL 7002



# THE LAB

## THE LAB (est. in 2014)

A cosy series with lovingly created details such as the collection of natural sciences. The laboratory of a natural scientist with souvenirs of all decades and species. Subdued colours and material mix from velvet to glass and iron are significant for the furniture, the accessories are souvenirs of all decades as well as beautiful devices of chemistry, biology and physics.

## EXEMPLARY ARTICLES:



35815



36254



78828



78634



## COLORRANGE:

PANTONE 7769

RAL 7002



# BOATTRIP

## BOATTRIP *(est. in 2011)*

*It's all about nature and the effects that time leaves on favourite items: Boats from Bali beaches are remodeled into cupboards, and treasures from far away will find their place in this arrangement, too. The paint faded, the surfaces aged and the colours look like they have spent the summer on the beach.*

## EXEMPLARY ARTICLES:



74572



76691



73649



## COLORRANGE:

PANTONE 7702

RAL 7006



# PSYCHO

**PSYCHO** (est. in 2012)

*Too much is never enough! The brightest colours, the most psychedelic details, neon everywhere and shapes from the 70ies and the future will impress the eye.*

## EXEMPLARY ARTICLES:



76108



34751



75192



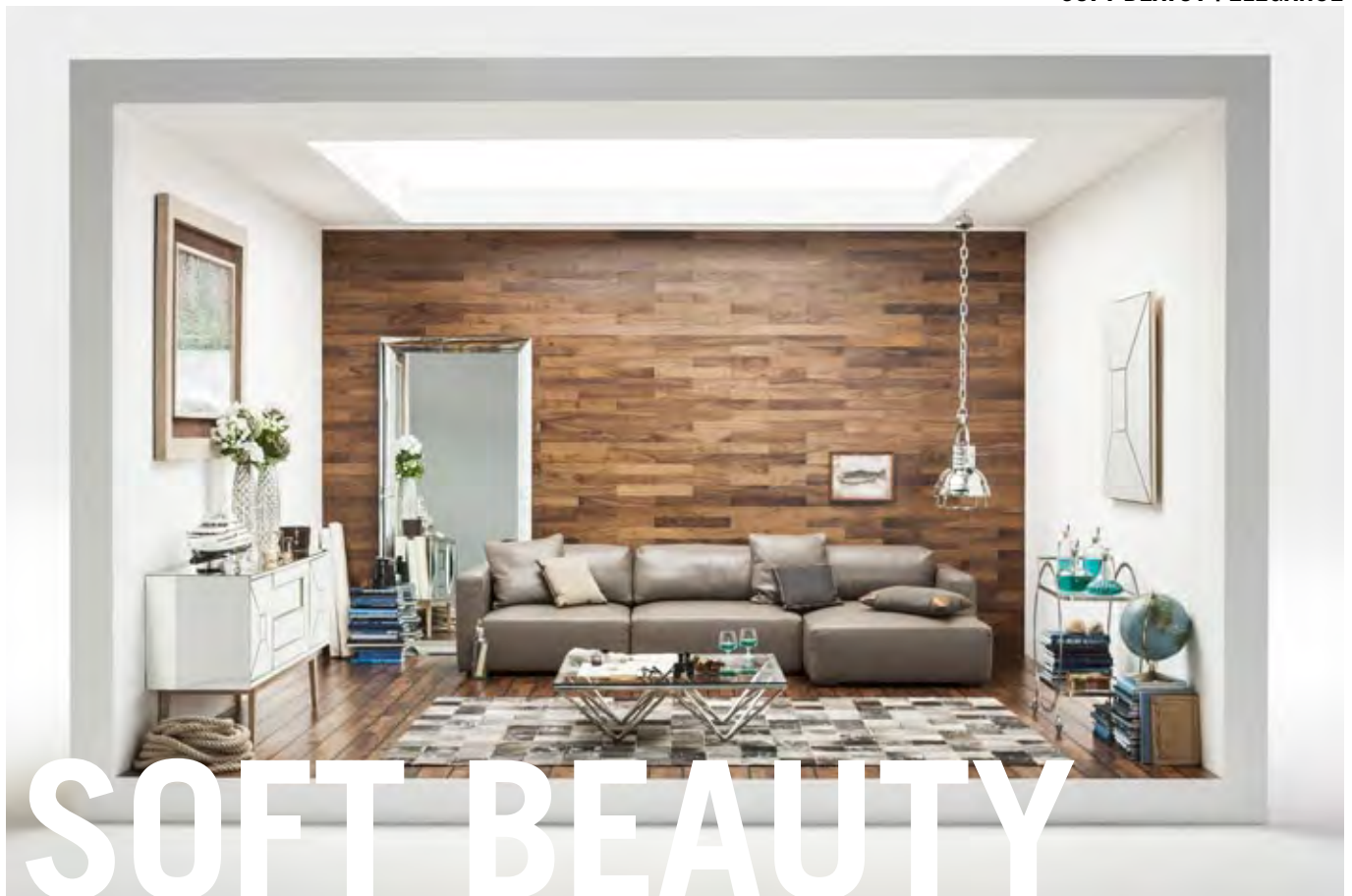
34045



## COLORRANGE:

PANTONE 286

RAL 5002



## SOFT BEAUTY (est. in 2012)

*Lightness and elegance are essential for the soft beauty style. Big mirrors create more space and a lofty atmosphere, glass details complete the luxury look. Keep the walls light and the floor new and shiny, every high-end yacht would wish for this look in the living room.*

## EXEMPLARY ARTICLES:



77954



31634



77747



78004



## COLORRANGE:

WHITE



# NATURE LINE

## NATURE LINE (est. in 2012)

*Nature Line are pieces of furniture that go along with many styles, which does not mean they are not special: every piece is one of a kind, with naturally shaped table tops and organic forms for the chests of drawers. The natural look is being contrasted with shiny and straight matte steel. Complete the look with rough denim material for carpets or solitary pieces.*

## EXEMPLARY ARTICLES:



76600



77702



78221



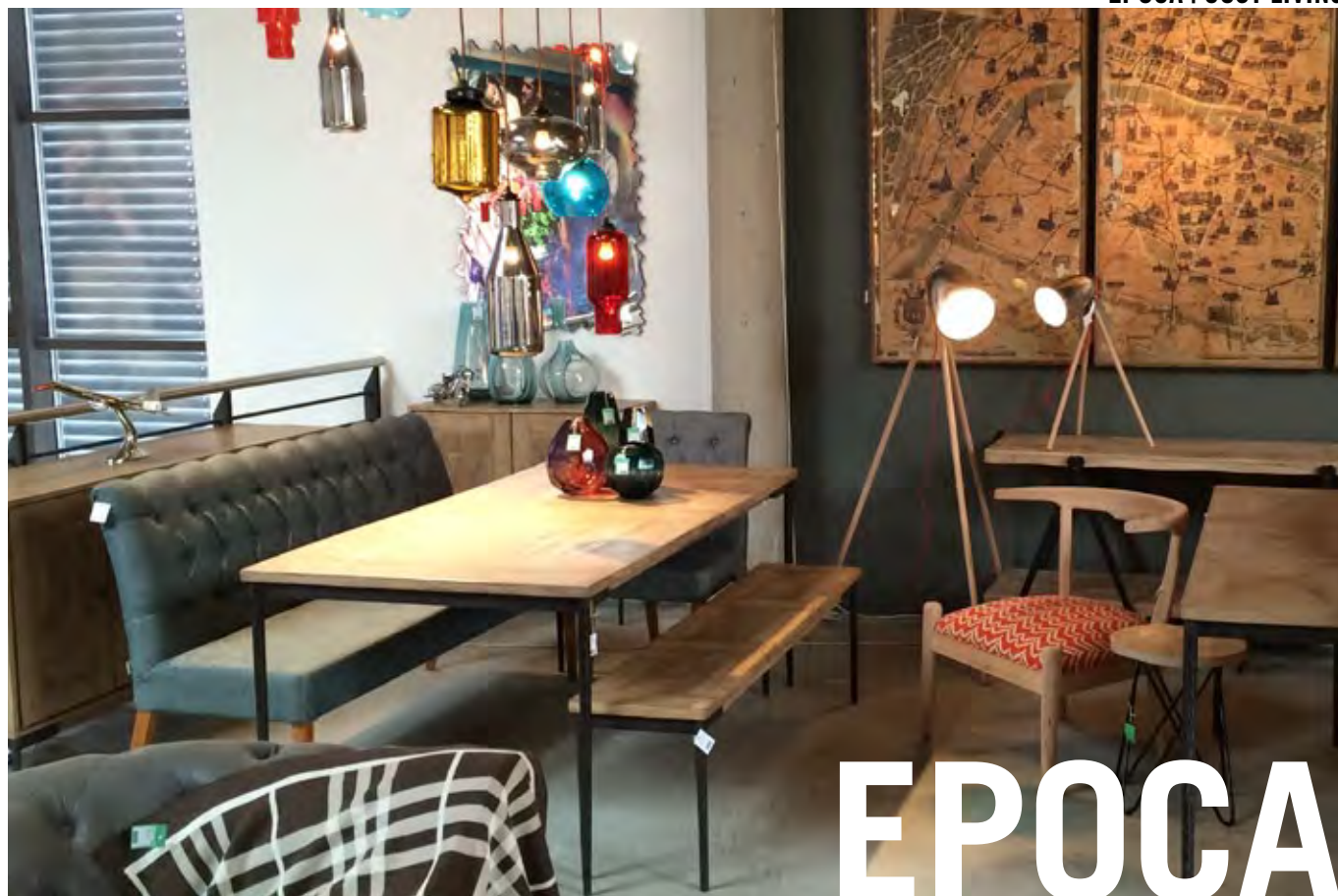
77623



## COLORRANGE:

PANTONE 7769

RAL 7002



## EPOCA (est. in 2013)

A fine mix of eucalyptus wood and slender steel make an elegant basis for a modern surrounding with mid-century details. Armchairs and loveseats in 50ies shape and colours supplement the cosy atmosphere. Accessories and small furniture made of ceramics, felt and glass fit well.

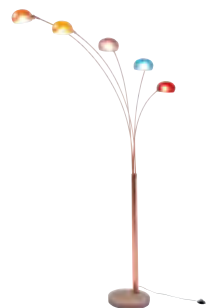
## EXEMPLARY ARTICLES:



78205



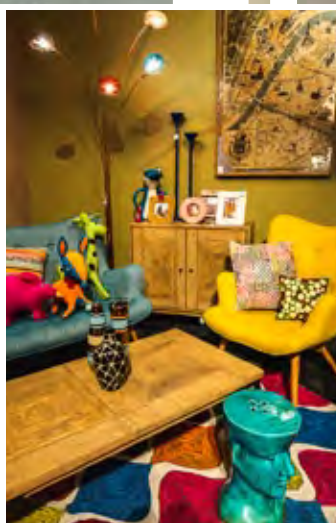
35361



36369



36435



## COLORRANGE:

PANTONE 7769

RAL 7002

PANTONE 7682

RAL 5023

PANTONE 7762

RAL 6003



## RODEO (est. in 2011)

Rodeo is the modern Mountain Loft - a mixture of natural colours of materials. Leather meets cowskin, Wood meets iron. Walls and floor are kept raw. Accessories can be all types of animal-shaped articles, the light is low and the atmosphere is cozy.

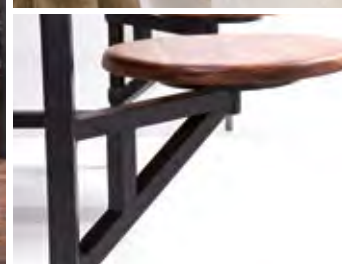
## EXEMPLARY ARTICLES:



68818



78336



## COLORRANGE:

PANTONE 2332

RAL 7005



78200



76375

# CIGAR LOUNGE



## CIGAR LOUNGE (est. in 2011)

Warm, exclusive and imperishable. Natural woods in dark colours and worked by expert craftsmen combine with lovingly tanned leather, partly with styled with buttons, to generate an intimate atmosphere of well-being and the cultivated atmosphere of the British gentlemen's club. Both globetrotters and stay-at-homes of all ages love this timeless style for the countless possible combinations it offers. With the right accessories the magic of Africa, the cosiness of a mountain chalet or the fiery temperament of Cuba can be added to your home.

## EXEMPLARY ARTICLES:



71672



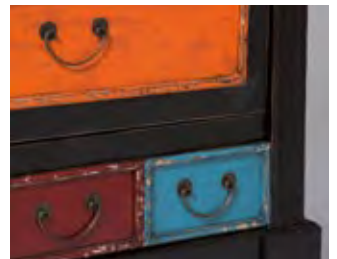
30559



74794



76186



## COLORRANGE:

PANTONE 2352

RAL 4008

PANTONE 235

RAL 4007

# AFRICAN QUEEN



## AFRICAN QUEEN (est. in 2006)

*Creating a touch of Africa for home - natural materials and colours highlight the Ethno-Style. Animal prints, woods and everything safari merge to an exotic and homelike atmosphere.*

## EXEMPLARY ARTICLES:



32927



71793



78061



71449



## COLORRANGE:

PANTONE 7529

RAL 1019



# COPPER MINE

## COPPER MINE (est. in 2014)

*Furniture in the colour of natural resources combined with lights and accessories in coppery shade. The flair of locomotion and combination of shiny and raw metals as well as fine leather merge to a room with industrial flair.*

## EXEMPLARY ARTICLES:



34414



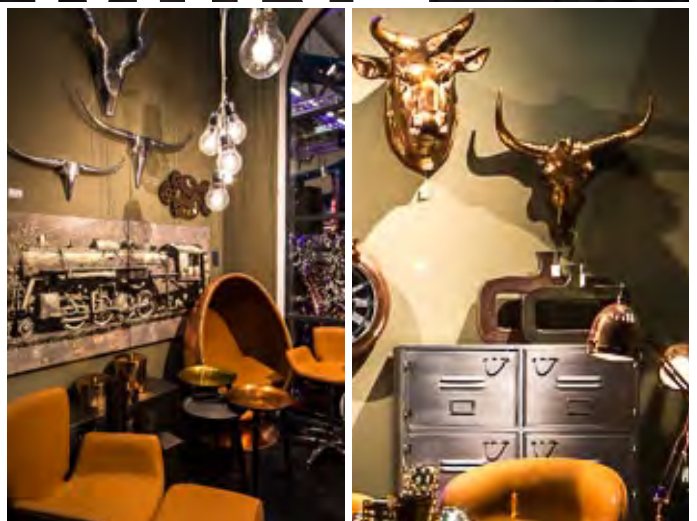
35792



78818



78001



## COLORRANGE:

PANTONE 7769

RAL 7002



# FUSION

**FUSION** *(est. in 2007)*

## EXEMPLARY ARTICLES:



73231



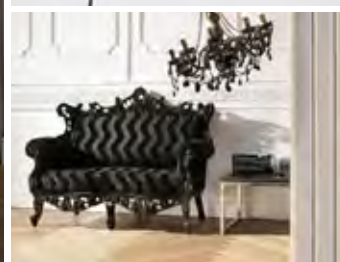
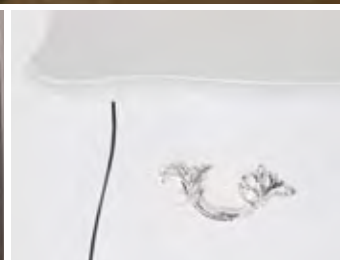
71602



75577



74296



## COLORRANGE:

WHITE

BLACK



## AQUARAMA (est. in 2009)

Aquarama - eye-catching and trend-setting - with the attributes of youth, wealth and beauty. This line is in-your-face, fashion-conscious, high-profile, sensual, feminine and very, very affordable. Leathertex with crocodile look and laquered wood in combination with colours ranging from soft pastel white, high gloss gold and matt gold an silver tones highlight the contemporary extravagance of this gorgeous line.

### EXEMPLARY ARTICLES:



73358



32371



73666



73315



### COLORRANGE:

WHITE



## POP ART (est. in 2007)

Vibrant colours and playful shapes combine against uniformity: pink and red match well together, yellow and purple join to be an eyecatcher. Accessories come in all colours, money banks in animal shapes and white furniture creates a calm contrast to the poppy collection.

### EXEMPLARY ARTICLES:



78837



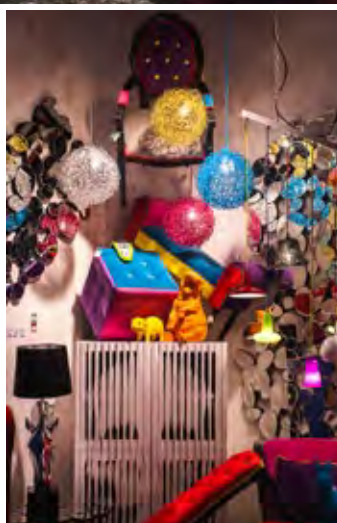
35715



35906



34544



### COLORRANGE:

PANTONE 116	RAL 1018
PANTONE 354	RAL 6018
PANTONE 3005	RAL 5015
PANTONE 1505	RAL 2003
PANTONE 225	RAL 4010



## MOULIN ROUGE (est. in 2014)

*Moulin Rouge is a feminine living concept in shades from girlish pink to luscious red. Caressing materials like sinful lace and affectionate velvet complete the shapes of the lush decades Art Deco and Baroque. A surrounding for the modern romantic, the burlesque enthusiasts and lovers of anything opulent.*

### EXEMPLARY ARTICLES:



78936



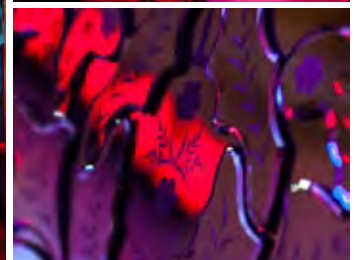
36175



36355



78792



### COLORRANGE:

PANTONE 254 C

RAL 4006

PANTONE 186 C

RAL 3027



## CABANA (est. in 2005)

What looks as if it has been ravished by time over many years is the result of our elaborate antique finish, giving your precious furniture its final touch and providing this exclusive product of the cabinet maker's art with its individual character. Hand-crafted, deliberately created traces of use and artistically highlighted, bemishes give real Cabana furniture the unmistakable and individual charm of Caribbean colonial-style furniture. This special lived-in look, which would normally take you years of daily use, is right here.

## EXEMPLARY ARTICLES:



2368



2164



3438



69822



## COLORRANGE:

PANTONE 7733

RAL 6002

PANTONE 228

RAL 4004



# VANITY

## VANITY *(est. in 2013)*

*Posh and chic - shiny and dark, straight and clear, the Metropolis customer has classy taste and isn't afraid to show it. Fine Arts and fine materials, Leather and ebony, vintage photography and souvenirs of the past make the ultimate surrounding for modern dandys and classic divas.*

## EXEMPLARY ARTICLES:



35096



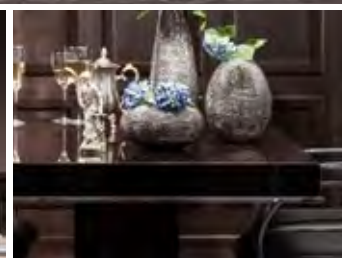
35384



78123



78262



## COLORRANGE:

PANTONE 449

RAL 8014

# WONDERLAND



## WONDERLAND (est. in 2008)

Everything is possible in Wonderland - the craziest shapes, the funkiest colours and odd-sized mushrooms which serve as tables and stools. Wonderland can be anywhere and the inhabitants like flowery details and crazy shapes.

## EXEMPLARY ARTICLES:



77915



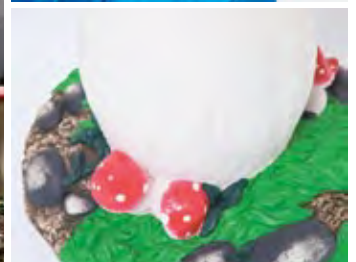
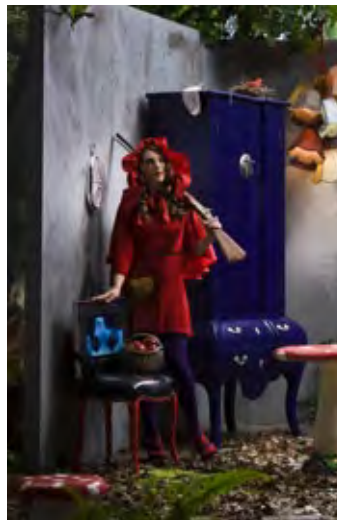
75869



75927



69897



## COLORRANGE:

PANTONE XX

RAL 5002



# PASTEL POP

## PASTEL POP *(est. in 2014)*

*Fun in white and pastel colours. Light pink, yellow and green give a modern twist to classic shapes. Materials are high gloss MDF, plastic, decorated with light wood and chrome.*

## EXEMPLARY ARTICLES:



78664



78809



36117



78665



## COLORRANGE:

PANTONE 1 COOL GREY

PANTONE 653

RAL 5007

PANTONE 578

RAL 6019

PANTONE 1905

RAL 3015

PANTONE 457

RAL 1027



# B-SQUARE

## B-SQUARE *(est. in 2014)*

*Sorriso is the smile on every customers face - a light mix with scandinavian touches. Light wood, 50ies inspired shapes and soft colours create a cozy atmosphere. Fun details and accessories from unusual materials make a modern twist. Sorriso is the trendshow for collectors and nostalgia lovers.*

## EXEMPLARY ARTICLES:



78874



78877



36221



35306



## COLORRANGE:

PANTONE 728 C



## PICASSO (est. in 2014)

*All black and white, but with a twist - just like the artist himself would have liked to be surrounded in these days. High contrasted prints as well as well-known patterns such as pepita let us have look inside of an artist's brain.*

### EXEMPLARY ARTICLES:



79242



79240



79323



79329



### COLORRANGE:

WHITE

# DARK CHALET



## DARK CHALET (est. in 2014)

*The darker brother of the popular Chalet collection comes in warmer shades but with the same attitude: combining craftsmanship, precious materials and elements from the Mocca trendshow make high class surrounding for all those who like to dine and wine in style*

## EXEMPLARY ARTICLES:



79169



79187



79170



79167



## COLORRANGE:

BLACK



# ART MIAMI

## ART MIAMI *(est. in 2014)*

*Too much is never enough! Pastels and neon colours go well together, gold colour and bold tapestry complete the look. This is where bad taste meets good taste and kitsch and glamour become one.*

## EXEMPLARY ARTICLES:



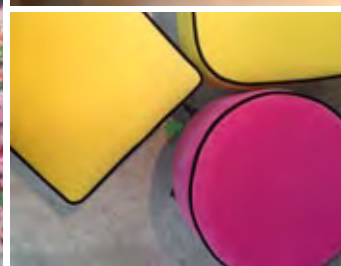
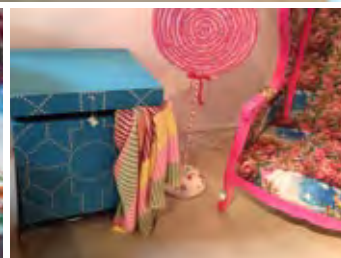
79344



79203



79112



## COLORRANGE:

WHITE

# SCISSORS



## SCISSORS (est. in 2014)

*This is how the modern farm looks like: how does an fashionable outcast live in his hideaway? Of course: stylish, fashionable, functional and with a twist of nostalgia.*

## EXEMPLARY ARTICLES:



79127



79143



## COLORRANGE:

WHITE

# WHITE NATURE



## WHITE NATURE (est. in 2014)

*A cool, natural and adaptable look for all those, who like to combine coolness with loveable details. Furry standalones meeting turquoise accessories meeting romantic mirrors meeting wooden pieces of furniture - this classic trendshow steadily allows you to discover something new.*

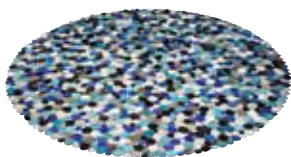
## EXEMPLARY ARTICLES:



79163



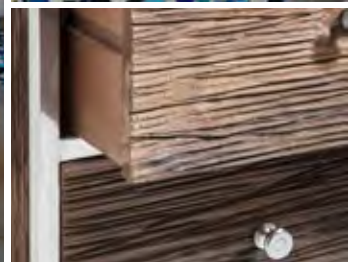
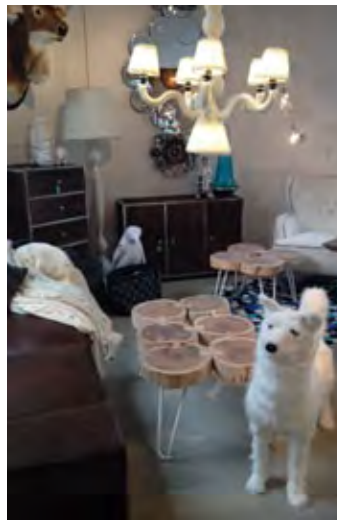
79017



36701



79015



## COLORRANGE:

WHITE

# GLASS

## GLAS (est. in 2014)

*The shapes are borrowed from the seventies, lines and forms are clear and with round edges. In a wild and crazy surrounding the key pieces offer an architecturally calmness.*

### EXEMPLARY ARTICLES:



79045



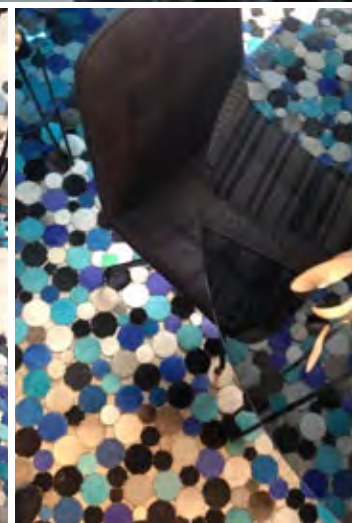
36699



79047



79046



### COLORRANGE:

WHITE

BLACK

**...to be continued**

